

***Stanley
Black &
Decker***

CUSTOMER TESTIMONIAL

QUALITYLINE
QUALITY IN MANUFACTURING



OVERVIEW AND OPERATIONAL MODE

STANLEY HEALTHCARE

Stanley Black & Decker has provided tools and innovative quality solutions since 1843. STANLEY Healthcare is a part of Stanley Black & Decker and provides innovative solutions and technology for safer, more secure care in senior living, hospitals and clinics.

This testimonial is based on an interview with Benjamin Dominitz, product quality manager and Eyal Zilca, Testing Leader at STANLEY Healthcare.

CHALLENGES AND BUSINESS GOALS

A BRIEF SUMMARY

Management's key goal is to improve the efficiency (First Pass Yield)

Improve product quality

Monitoring the quality of PCBA modules delivered to us by our contract manufacturers

Improving New Product Introduction (NPI) before outsourcing production to our contract manufacturers

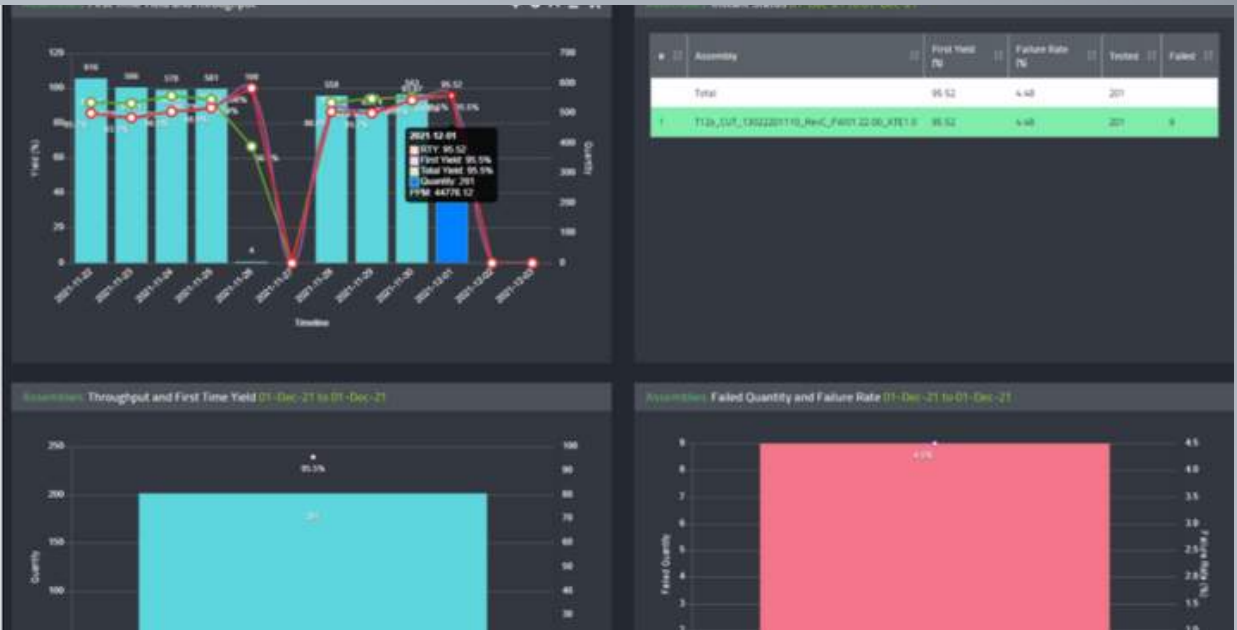
KEY ACHIEVEMENTS

BENEFITS BY QUALITYLINE

The First Pass Yield increased from 63% to 94%

The Failure Rate dropped from 37% to 2.3%

“With QualityLine AI analytics platform, we are able to drill down into each unit, component, and problem to quickly identify the root cause.”





THE FOLLOWING STRATEGIES WERE USED TO ACHIEVE GOALS AND CONTINUOUS IMPROVEMENT

Identifying manufacturing problems via automated alerts to improve efficiency

"Our 'project' started with a first pass yield of 63% - and by the end of the week, we had reached a 90% first pass yield."

Automated root cause analyses - Quick and accurate/Real time

"The QualityLine points out the most relevant changes and issues at the production line so we can fix them and improve our quality, without wasting time on irrelevant issues."

Enhance product design for manufacturability by early detection of failures

"QualityLine analytics help optimize the production process such as detecting failures early in the process. It is often the case that testing results are drastically different from what we expect. QualityLine can help us understand why and when it is necessary to return to R&D."

Finding the cause of the problem through cross-correlation

"Using the QualityLine AI Analytics in our various stages, the AI Analytics can compare and determine which threshold changes yield the best results".

Feedback loop between production, engineering, and design teams

"QualityLine alerts our manufacturing teams (R&D, engineering, quality, operations) about problems, and which teams should fix them, preventing them from happening again and improving design for manufacturability".



EXPERTISE IN ANALYTICS

Collaborative meetings

"As part of the offer QualityLine provides suggested solutions to our problems, such as: changing some of the parameters limits, Identifying and predicting which units are at risk.

Having this information available instantly allows us to constantly improve."

IMPROVE MASS PRODUCTION FROM A DISTANCE

Web based solution

" QualityLine analytics allow us to remotely monitor the performance and quality of our contract manufacturers and prevent the delivery of faulty products to our customers."





PRODUCTION OF MEDICAL DEVICES

THE CHALLENGER TO KEEP HIGH QUALITY PRODUCTS THAT SAVE LIVES

"The production of medical devices presents many challenges. Here at Stanley healthcare we manufacture products that each card contains many details, and functionalities that must perform well together.

Testing all parameters, processes and each data source simultaneously is essential, and QualityLine makes it possible."

Eyal Zilca, Testing Leader at STANLEY Healthcare.



CONTACT US

REQUEST HERE A LIVE
DEMO OF QUALITYLINE'S
SOLUTION

www.quality-line.com
info@quality-line.com